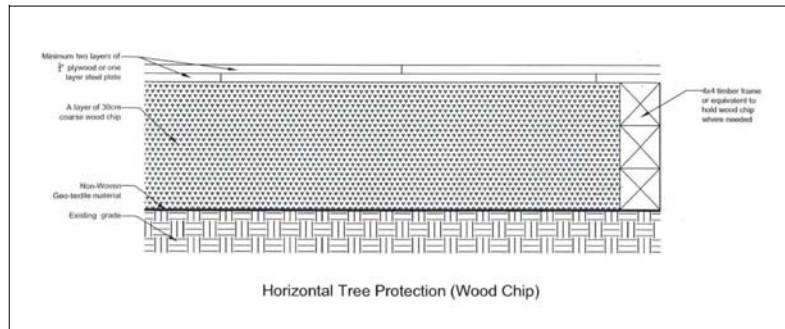
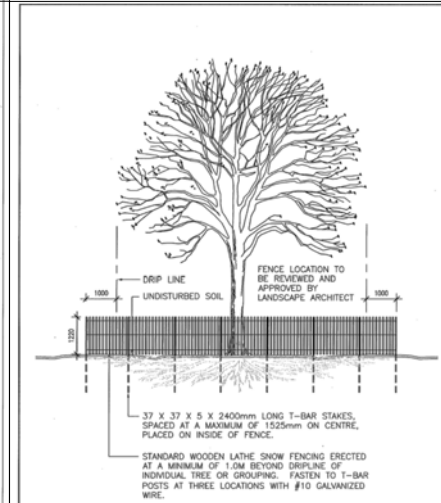
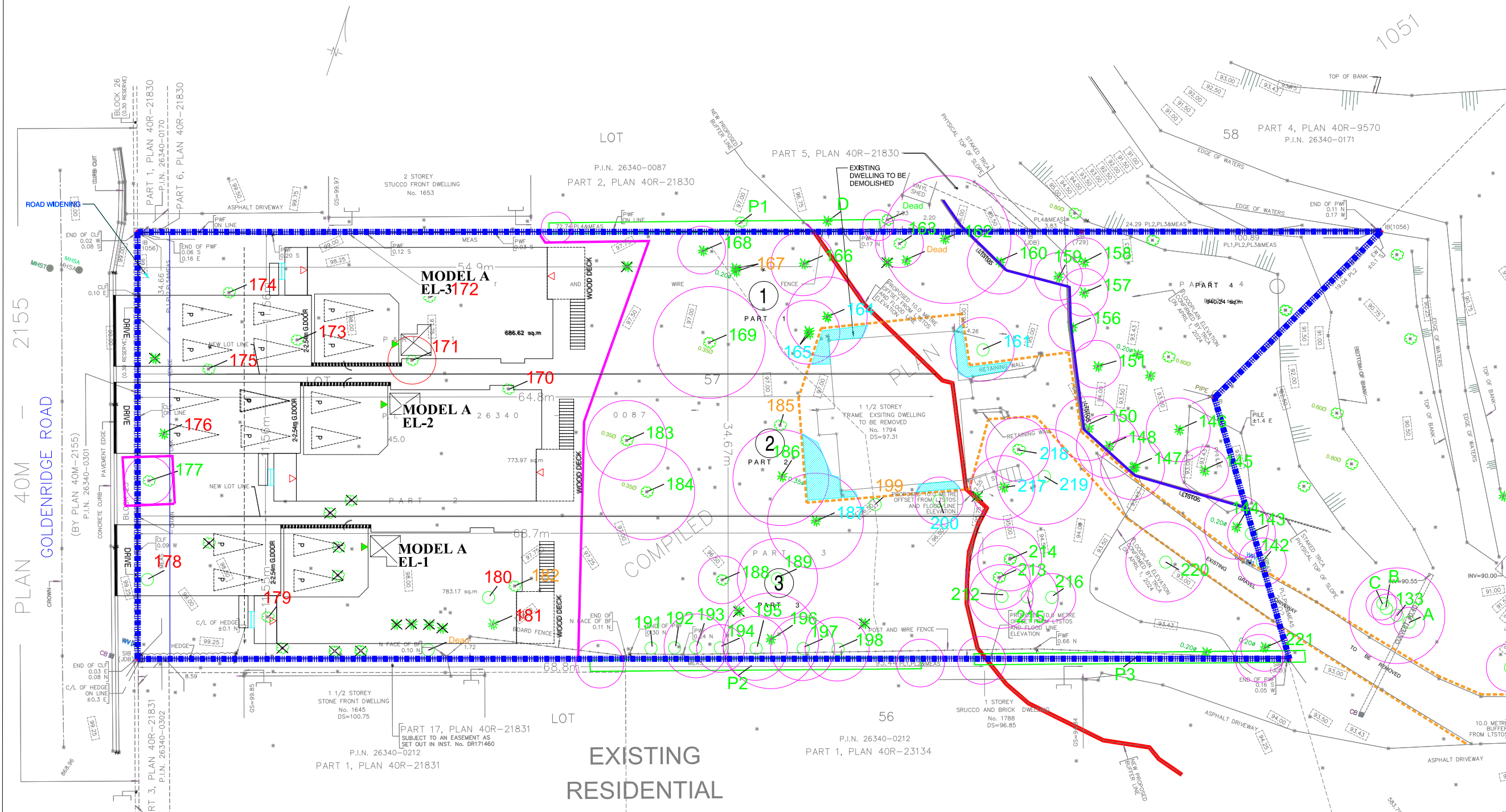


- ALL EXISTING TREES WHICH ARE TO REMAIN SHALL BE FULLY PROTECTED WITH SNOW FENCING OR SIMILAR STRUCTURES ERECTED OUTSIDE THE GRIP LINE OF THE TREES, PRIOR TO COMMENCEMENT OF CONSTRUCTION. GROUPS OF TREES AND OTHER EXISTING PLANTINGS TO BE PROTECTED SHALL BE DONE IN A LIKE MANNER WITH SNOW FENCING OR OTHER SIMILAR STRUCTURES AROUND THE ENTIRE CLUMP(S). AREAS WITHIN THE PROTECTIVE FENCING SHALL REMAIN UNDISTURBED AND SHALL NOT BE USED FOR THE STORAGE OF BUILDING MATERIALS OR EQUIPMENT.
- NO RIGGING CABLES SHALL BE WRAPPED AROUND OR INSTALLED IN TREES AND SURPLUS SOIL, EQUIPMENT, DEBRIS OR MATERIALS SHALL NOT BE PLACED OVER THE ROOT SYSTEMS OF THE TREES WITHIN THE PROTECTIVE FENCING. NO CONTAMINANTS ARE TO BE DUMPED OR FLUSHED WHERE FEEDER ROOTS OF TREES EXIST.
- THE CONTRACTOR SHALL TAKE EVERY PRECAUTION NECESSARY TO PREVENT DAMAGE TO TREES OR SHRUBS TO BE RETAINED.
- WHERE LIMBS OR PORTIONS OF TREES ARE REMOVED TO ACCOMMODATE CONSTRUCTION WORK, THEY WILL BE CLEANLY CUT IN ACCORDANCE WITH ACCEPTABLE ARBORICULTURAL PRACTICES.
- WHERE ROOT SYSTEMS OF PROTECTIVE TREES ARE EXPOSED DIRECTLY ADJACENT TO OR DAMAGED BY CONSTRUCTION WORK, THEY SHALL BE TRIMMED NEATLY AND THE AREA BACK-FILLED WITH APPROPRIATE MATERIAL IN A TIMELY MANNER TO PREVENT DRYING.
- WHERE NECESSARY, THE TREES SHALL BE GIVEN AN OVERALL PRUNING TO RESTORE THE BALANCE BETWEEN ROOTS AND TOP GROWTH OR TO RESTORE THE APPEARANCE OF THE TREE.
- TREES SCHEDULED FOR PRESERVATION THAT HAVE DIED OR BEEN DAMAGED BEYOND REPAIR SHALL BE REPLACED BY THE CONTRACTOR AT HIS OWN EXPENSE BY TREES OF A SIMILAR SIZE AND SPECIES OR SUCH SIZE AND SPECIES AS APPROVED BY THE LANDSCAPE ARCHITECT.
- IF GRADES AROUND TREES TO BE PROTECTED ARE LIKELY TO CHANGE, THE CONTRACTOR SHALL BE REQUIRED TO TAKE SUCH PRECAUTIONS AS DRY WELLING AND ROOT FEEDING TO THE SATISFACTION OF THE CITY OF PICKERING.
- SHOULD A CONFLICT OCCUR BETWEEN TREES SCHEDULED FOR PRESERVATION AND THE PROPOSED CONSTRUCTION APPROACH, SHALL BE OBTAINED IN WRITING FROM THE CITY OF PICKERING PRIOR TO PROCEEDING WITH THE REMOVAL OF SUCH.
- ANY TREES DESIGNATED FOR REMOVAL SHALL BE REMOVED IN ENTIRETY INCLUDING ALL STUMPS AND ROOTS AND DISPOSED OF OFF SITE. NO BURYING OF TREE BRANCHES AND STUMPS WILL BE PERMITTED.



City of Pickering	Engineering Services Department
Project No. P-1101	Sheet No. P-1100
<b>TREE PROTECTION NOTES</b>	

City of Pickering	Engineering Services Department
Project No. P-1101	Sheet No. P-1100
<b>TREE PRESERVATION PROTECTION FENCING DETAIL</b>	



## LEGEND

- Tree Inventory**  
Refer to Table 1 of report dated 15 September 2025 for tree inventory. All tree resources greater than 15cm DBH on and within six metres of the subject property were included in the inventory.
  - Tree Removals**  
The removal of 11 trees is required to accommodate the proposed construction. Tree removals are indicated with RED labels. The removal of an additional four trees is recommended due to their poor condition, and indicated with ORANGE labels.
  - Tree Preservation**  
The preservation of all other trees will be possible with the use of appropriate tree protection measures. Minimum tree preservation zones (mTPZs) and required tree preservation hoarding are indicated in MAGENTA. mTPZs indicate minimum distances for construction and disturbance adjacent to trees. Trees identified for preservation are indicated with GREEN labels.
- |  |  |
|--|--|
| Tree Label (GREEN), Preservation Recommended                                       | <span style="color: green;">X</span>   |
| Tree Label (RED), Removal Required   | <span style="color: red;">X</span>   |
| Tree Label (ORANGE), Removal Recommended Due to Condition                          | <span style="color: orange;">X</span>  |
| Tree Label (CYAN), Tree to be preserved (Injury required)                          | <span style="color: cyan;">X</span>  |
| Tree Location Estimated by KFCI  | <span style="border: 1px solid green; border-radius: 50%; width: 10px; height: 10px; display: inline-block;"></span>   |
| Minimum tree preservation zone (m), from edge of tree                              | <span style="border: 1px solid magenta; border-radius: 50%; width: 10px; height: 10px; display: inline-block;"></span> |
| Minimum tree protection zone of select trees identified for removal (RED circle)   | <span style="border: 1px solid red; border-radius: 50%; width: 10px; height: 10px; display: inline-block;"></span>     |
| Location of Required Tree Preservation Fencing (thick MAGENTA) during construction | <span style="border-bottom: 2px solid magenta; width: 20px; display: inline-block;"></span>                            |
| Location of Required Tree Preservation Fencing (thick MAGENTA) during demolition   | <span style="border-bottom: 2px dashed magenta; width: 20px; display: inline-block;"></span>                           |
| Location of Horizontal Hoarding during demolition                                  | <span style="border-bottom: 2px solid blue; width: 20px; display: inline-block;"></span>                               |
| Tree No Longer Exists  | <span style="color: red;">X</span>   |
| LTSTOB 10m Offset  | <span style="border-bottom: 2px solid red; width: 20px; display: inline-block;"></span>                                |

Issue/Revisions	Date	By
1 Report Submission	15 Sept '25	NB

Base Data:

**KUNTZ FORESTRY CONSULTING Inc.**

146 Lakeshore Road West  
PO Box 1267 Lakeshore W PO  
Oakville ON L6K 0B3  
T: 289.637.1871  
e: consult@kuntzforestry.ca  
web: www.kuntzforestry.ca

Client  
**Almont Homes Inc.**

Property  
**1794 Appleview Road  
City of Pickering, Ontario**

### Tree Inventory and Preservation Plan

Project	P4728	Figure	1
Date	15 September 2025		
Scale	1:350		